



2020

ThermWise[®] Business Custom Rebates Program Manual

1	INTRODUCTION	4
1.1	Program Overview	4
1.2	Program Manual	4
2	ELIGIBILITY REQUIREMENTS	5
2.1	Qualifying Customers	5
2.2	Qualifying Standard-Analysis Measures	5
2.3	Qualifying Simplified-Analysis Measures	6
2.4	Eligible Project Costs	6
2.5	Baselines for Energy Savings and Incremental Costs	7
3	PARTICIPATION INFORMATION	8
3.1	Business Custom Rebate Structure	8
3.2	ThermWise Business Custom Rebates Funding Levels	8
3.3	Program Timeline	8
3.4	Baselines for Energy Savings and Incremental Costs	9
3.5	Project Review Process – Standard-Analysis Measures	10
3.6	Project Review Process – Standard-Analysis Measures	11
3.7	Project Review Process – Standard-Analysis Measures	12
3.8	Program Administrator Contact Information	12
4	STANDARD-ANALYSIS MEASURES – PROGRAM SUBMITTALS	13
4.1	Pre-Installation Report (PIR)	13
4.2	Post-Installation Report (POR)	14
4.3	Energy Engineering Analysis Requirements	14
4.4	Project Commissioning	15
4.5	Deemed Savings	16
4.6	Simple Monitoring & Verification (M&V)	16
4.7	Full Monitoring & Verification (M&V)	16
5	SIMPLIFIED-ANALYSIS MEASURES – PROGRAM SUBMITTALS	17
5.1	Pre-Installation Report (PIR) – Boiler Controls ONLY	17
5.2	Post-Installation Report (POR)	17
5.3	Energy Engineering Analysis Requirements	18
5.4	Project Commissioning	18

6 THERMWISE BUSINESS PROGRAMS OVERVIEW.....	19
APPENDIX A Frequently Asked Questions.....	20
APPENDIX B Thermwise Business Custom Rebates - Availability.....	23

Table of Figures

Figure 2-1 Location of Account Information on Customer Bill.....	5
Figure 2-2 Examples of Eligible Measures.....	6
Figure 3-1 Review Process – Standard-Analysis Measures.....	10
Figure 3-2 Review Process – Simplified-Analysis Measures.....	11
Figure 4-1 - Measurement and Verification Method Selection.....	15
Figure 6-1 Thermwise Business Programs Overview.....	19

1.1 Program Overview

The ThermWise Business Custom Rebates Program is a rebate opportunity offered by Dominion Energy with the goal of obtaining verifiable, cost-effective, and long-term natural gas savings. Program participants submit project proposals for a firm quantity of natural gas reduction through the installation of energy-efficiency measures after review and approval by Dominion Energy. The program is designed to provide rebates to those business customers who do not qualify through the ThermWise Business Rebates Program.

The ThermWise Business Custom Rebates Program requires customers to submit specific information for each project and to conduct energy engineering and commissioning at their own cost. This project information will be provided in two reports: the Pre-Installation Report (PIR) and Post-Installation Report (POR). Rebates will be paid directly to participating customers who meet the program requirements.

The Business Custom Rebates program also includes supplemental Customer Technical Services, including Commercial Benchmarking, Recommissioning, and Strategic Energy Management, available to targeted customers with particular energy usage parameters.

Primary program administrative functions have been contracted to Nexant. Dominion Energy will support the program delivery by identifying customer installation opportunities and assisting customers with program requirements where applicable.

1.2 Program Manual

Rebates are available on a first-come, first-served basis. Projects must be submitted and approved prior to purchasing equipment and commencing construction activities to be eligible for a rebate. Pre-approval of projects will guarantee rebate funding availability when the project is completed (some restrictions apply). Eligible rebates will be paid within 45 days of approval of a completed project.

This program manual, designed for use by customers, contractors, architecture and engineering firms, energy services companies, and equipment manufacturers, outlines the rules and requirements of the Program. The manual is organized as follows:

- Section 2 addresses eligibility requirements for the customer, project, measure, and expenses.
- Section 3 contains information about participation in the program.
- Section 4 discusses the pre-installation and post-installation reports.
- Section 5 outlines the procedures for commissioning.
- Section 6 describes other ThermWise programs for business customers.

A standard program agreement, application templates, and frequently asked questions are contained in appendices at the end of this manual.

2.1 Qualifying Customers

To participate in the ThermWise Business Custom Rebates Program, a customer must be served by Dominion Energy in the State of Utah and install a qualifying measure in a separately-metered commercial facility on a Commercial GS rate schedule. Customers with questions regarding their account should consult the Program Administrator (Section 3.8) or their Dominion Energy Account Manager.

Customers can verify their rate schedule and service agreement number by looking on a recent bill. Figure 2-1 shows where to find the rate schedule on a typical Dominion Energy customer bill.

Figure 2-1 Location of Account Information on Customer Bill

Account information
The customer (1) account number and (2) service-agreement number can be found on the Dominion Energy monthly statement

Account Summary as of May 12, 2017

Previous Balance Due - 5/4/2017	41.00
Payments Received - 4/18/2017	-41.00
Current Charges - Gas Service (Budget)	41.00
Total Amount Due Upon Receipt	\$41.00

1% monthly interest (12% annually) charged on balance on or after 6/5/2017.

Residential Gas Service
Service Agreement: 0987654321

Comparison	Last Year	This Year
Decatherms/Day	0.07	0.09
Dollars/Day	\$0.80	\$0.89

Service from 4/13/2017 - 5/12/2017

Rate - GS	16.77
Charge for Gas Used (Avg cost per DTH \$ (6.70800))	6.75
Basic Service Fee Total	0.98
Utah Sales Tax (4.15%)	1.41
Municipal Energy Tax (6%)(Salt Lake City)	

2.2 Qualifying Standard-Analysis Measures

Qualifying measures include those that target cost-effective natural gas savings, including retrofits of existing systems, improvements to existing systems, and first-time installations where the system's efficiency exceeds Utah Energy Code or standard industry practice. The program does not explicitly specify eligible measures to provide program participants maximum flexibility in identifying potential projects. Participants may propose the inclusion of any measure that:

- Produces a verifiable natural gas usage reduction;
- Is installed in either existing or new construction applications;
- Has a minimum useful life of 7 years; and
- Meets at least minimum cost-effectiveness requirements for the utility cost test.

Measures that are excluded from consideration in this program include those that:

- Receive a rebate through any other energy efficiency program offered by Dominion Energy;
- Rely solely on changes in customer behavior;
- Merely terminate existing processes, facilities, or operations;
- Involve fuel-switching; or
- Are required by state or federal law, building or other codes, or are standard industry practice.

Examples of eligible measures are listed in Figure 2-2. Customers are free to propose measures not included in the table, so long as the above requirements are met. Please consult with the Program Administrator to determine whether proposed measures will qualify for the Business Custom Rebate Program.

Figure 2-2 Examples of Eligible Measures

Solar Hot-Water Heating Control system upgrades Process equipment insulation improvements

2.3 Qualifying Simplified-Analysis Measures

A defined list of measures will be eligible for rebates utilizing a Simplified Analysis Approach.

These measures include:

- Boiler Controls (Streamlined PIR/Streamlined POR Required)
- Boiler O2 Trim (Streamlined POR Required)
- Boiler Linkageless Controls (Streamlined POR Required)
- Combination Boiler Oxygen Controls (Streamlined PIR/Streamlined POR Required)
- Steam Traps (Streamlined POR Required)
- RCx "Find & Fix" (Streamlined POR Required)
- Combined Heat & Power (Streamlined PIR/Streamlined POR Required)
- High Performance Building Envelope (Streamlined POR Required)

2.4 Eligible Project Costs

Connection with the construction, installation or implementation, and commissioning of an eligible project. Costs may include equipment costs, engineering and consulting expenses, and labor costs. Expenses are subject to approval by the Program Administrator. For new construction or expansion of existing facilities, eligible expenses are those that are additional and necessary to achieve energy efficiency levels that exceed standard industry practice.

Customers shall provide cooperation and access as is reasonably required for the Program Administrator to make a determination of eligible costs. Material and labor costs must be thoroughly documented by the customer. Acceptable documentation of eligible costs may include invoices, work orders, cancelled checks, and accounting system reports.

2.5 Baselines for Energy Savings and Incremental Costs

The ThermWise Business Custom Rebates Program is designed to encourage customers to implement energy-efficiency improvements that result in systems that exceed standard industry practices or Utah State Energy Code requirements. Consequently, energy savings and eligible costs are calculated in comparison to an approved baseline: either specified by equipment inventory and operation prior to implementing qualified projects, requirements listed in the Utah State Energy Code, or standard industry practice. Determination of the baseline is project-dependent and Dominion Energy has the sole discretion to determine whether the baseline proposed by the customer is appropriate.

The Program Administrator may adjust baseline natural gas consumption and costs during the submittal review to reflect any of the following: energy codes, standard practice, changes in capacity, equipment operation, changes in production or facility use, and equipment at the end of its useful life.

Determination of an appropriate baseline should be based on the following guidelines:

- If the project is an elective retrofit and the equipment is still operable, the baseline is the existing equipment and operation.
- If the project is new construction, replacement of equipment at the end of its useful life, or an expansion, the baseline is the energy consumption and implementation cost for a facility/system to achieve energy-efficiency levels that meet applicable codes or is common industry practice.
- Where applicable, proposed HVAC, water heating, boiler, food service and laundry equipment will be required to meet minimum efficiency standards to qualify for rebates and will be paid only through the Business Rebates Program. Please refer to the ThermWise Business Rebates Program for specific equipment eligibility requirements.

3.1 Business Custom Rebate Structure

The ThermWise Business Custom Rebates' levels will be made by the Company for the installation of measures pursuant to the Program Agreement, as shown in the following table:

Measure Category	Rebate*	Measure Cost Cap*
Custom Analysis	\$10/Dth	50%
Simplified Analysis	\$10/Dth	50%
RCx "Find & Fix"	\$5/Dth	No Cap (Deemed)

* The rebate is determined by first year annual decatherm savings as determined solely by the Company

** The project cost cap is based on the eligible project costs as detailed in Section 2-2 of this manual

Commissioning Opt-Out: If the customer chooses to not conduct the commissioning activities approved in the Pre-installation report stage, the annual natural gas savings and the eligible measure costs will all be reduced by 20% and the rebate will be re-calculated using the provisions specified above. Measures for which the customer has "opted-out" of commissioning and are later commissioned are not eligible for additional rebates at a later date. Note: Commissioning and Commissioning Opt-Out do not apply to Simplified-Analysis Measure projects.

Rebates will be paid in the form of a check within 45 days of approval of the completed project by the Program Administrator.

3.2 ThermWise Business Custom Rebates Funding Levels

Program rebates are available on a first-come, first-served basis. Contact your Dominion Account Manager or the Program Administrator for information regarding program funding levels.

3.3 Program Timeline

The Business Custom Rebates Program became effective on January 1, 2008. Customers can submit Pre-Installation Reports (PIR) to the program subsequent to this date. The Program Administrator will review the PIR within 30 days of submission and notify the customer of approval or denial. Following approval of a Pre-Installation Report (PIR), the customer is required to enter into a Program Agreement with Dominion Energy to be eligible for rebates. After installing and commissioning the approved project, a Post-Installation Report (POR) must be submitted to the Program Administrator. Rebates will be paid in the form of a check within 45 days of approval of the completed project by the Program Administrator.

3.4 Baselines for Energy Savings and Incremental Costs

Customers must submit a complete Pre-Installation Report (PIR) and a W-9 before the Program Administrator will begin the review process. PIR templates are provided in Appendix B for standard Custom Rebate projects and Simplified Analysis projects and can be downloaded from the ThermWise website at www.ThermWise.com. Required components and submittals of the PIR and specific directions on how to properly complete the PIR applications are discussed in Section 4. Please note, the only exceptions to the PIR requirement are boiler O2 trim, boiler linkageless, RCx "find & fix", steam traps, & high performance building envelope applied for using the simplified analysis application.

Notification of pre-installation project approval or denial will be granted by the Program Administrator no later than 30 days after submission of a completed Pre-Installation Report. Incomplete and missing information will delay the approval process. Following approval of the PIR and prior to purchasing equipment or commencing construction activities, each customer will be required to sign the Business Custom Rebate Standard Program Agreement to be eligible for a rebate for Standard Program Measures. To be eligible for rebates, the Program Administrator must approve the submitted PIR and receive a signed Standard Program Agreement from the customer before any equipment is purchased or installed for Standard Program Measures.

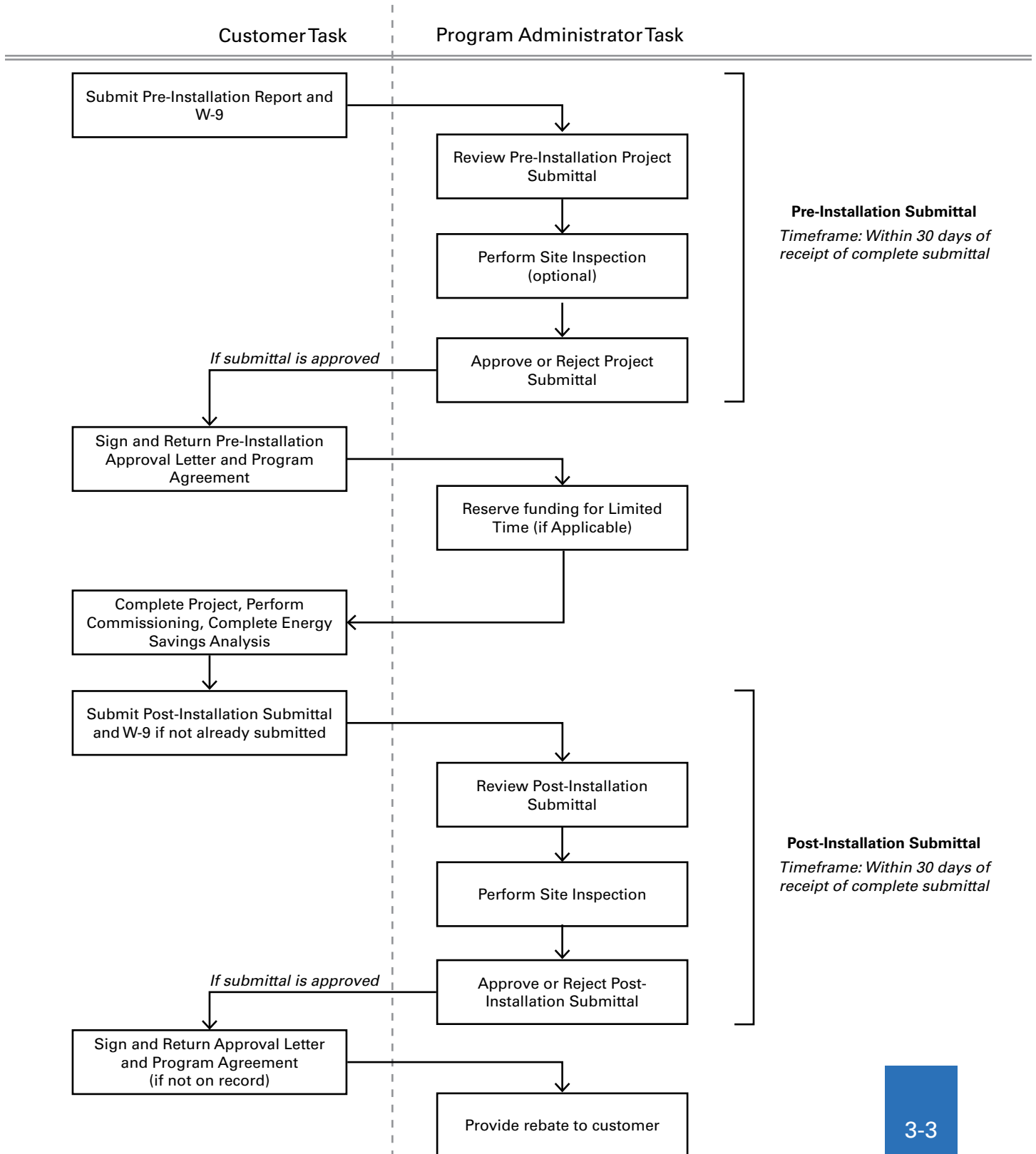
A Simplified Analysis Program Agreement is included with the Simplified Analysis PIR Application for boiler controls. The customer may only purchase and install an approved Simplified Analysis boiler control measure once a completed and signed Simplified Analysis PIR Application is submitted to and approved by the Program Administrator.

After receiving approval of the PIR from the Program Administrator, customers may commence with project activities. After installation is complete and the project has been commissioned according to the requirements in Section 5, the customer must submit a Post-Installation Report (POR) to the Program Administrator for review. POR templates for standard Custom Rebate projects and Simplified Analysis projects, and can be downloaded from the ThermWise website at www.ThermWise.com. Required components and submittals of the POR are discussed in Section 4. Notification of project approval or denial will be granted by the Program Administrator no later than 30 days after submission of a completed Post-Installation Report. Rebates will be paid in the form of a check within 45 days of approval of the completed project by the Program Administrator.

3.5 Project Review Process – Standard-Analysis Measures

The review processes for project submittals will follow the flowcharts presented in Figure 3-1.

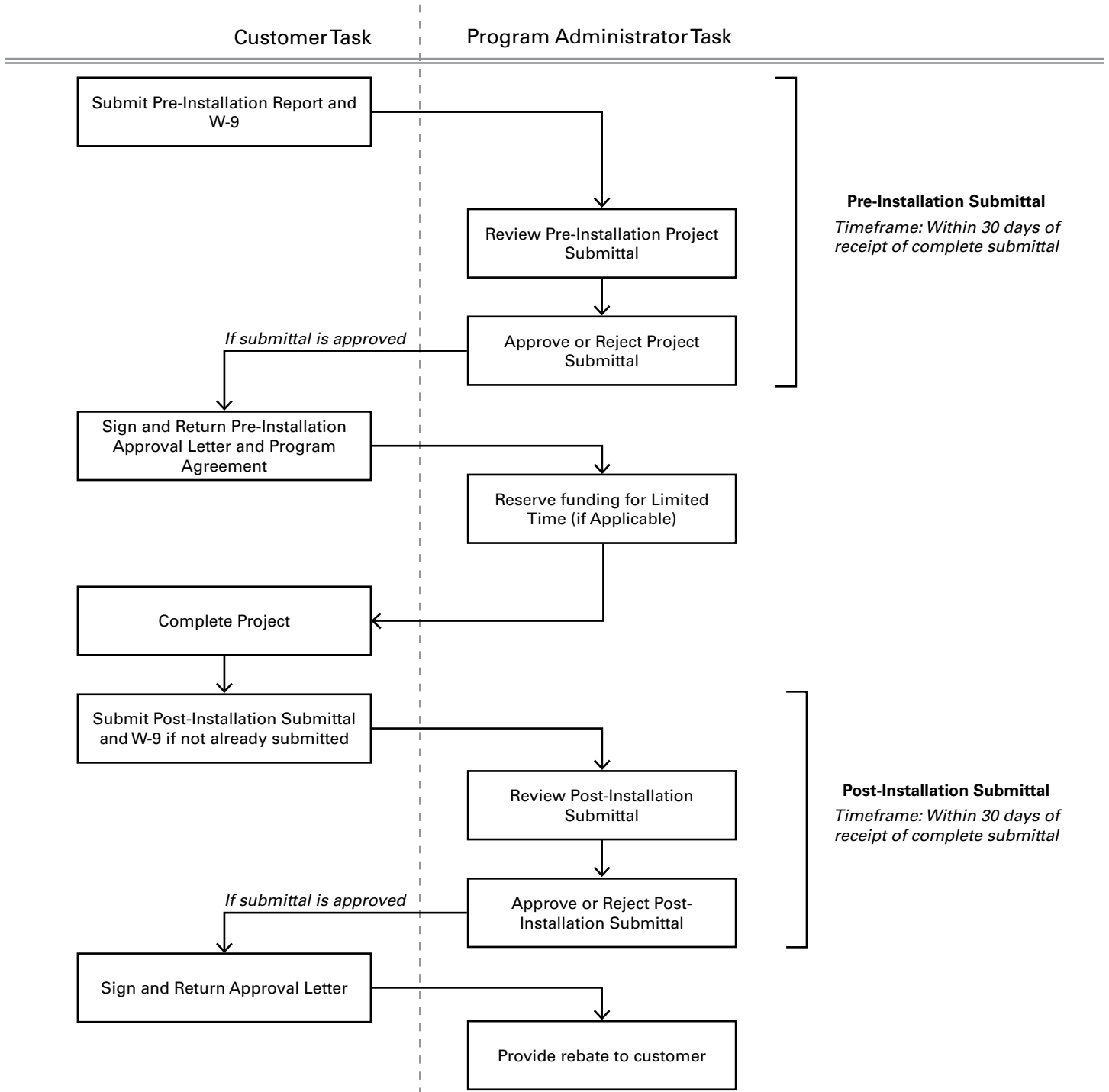
Figure 3-1 Review Process – Standard-Analysis Measures



3.6 Project Review Process – Standard-Analysis Measures

The review processes for boiler controls project submittals will follow the flowcharts presented in Figure 3-2.

Figure 3-2 Review Process – Simplified-Analysis Measures



3.7 Project Review Process – Standard-Analysis Measures

Dominion Energy will augment the technical submittal review of the PIR or POR with pre-installation and post-installation inspections and/or measurements as necessary.

For pre-installation inspections, the inspector will verify the baseline equipment quantity and nameplate information. If the proposed equipment has been installed before the pre-installation inspection and the baseline conditions cannot be verified, the project will be rejected. The inspector will evaluate the appropriateness of the submitted commissioning plan for the measure, ensure any necessary measurement activities are included and verify the proposed measurement technique.

For post-installation inspections, the inspector will verify that the eligible measure has been installed and is operating as described in the POR.

If measurements are necessary during either pre or post-installation inspections, the customer may be required to disrupt normal operation of equipment to enable measurement devices to be connected. If the inspection cannot be completed in a timely manner, the project will fail the inspection. If a project site fails two inspections, the customer must pay the cost incurred by Dominion Energy for any subsequent inspections.

3.8 Program Administrator Contact Information

Questions about the Program and project applications should be submitted to the Program Administrator at:

ThermWise Business Custom Rebates Program Administrator

P.O. Box 45360

Salt Lake City, UT 84145-0360

800-867-2044

Email: business@thermwise.com

4.1 Pre-Installation Report (PIR)

Program participants must submit a Pre-Installation Report (PIR) describing the scope of the proposed project, existing equipment and operational practices and pertinent site-specific information to be considered for a rebate along with a W-9. A PIR template can be downloaded from the ThermWise website at www.ThermWise.com.

To adequately assess projects for eligibility and program approval, the customer must submit the following information to the Program Administrator as part of the PIR:

- Customer Contact and Federal Tax Information (W-9)
- Project site address, Dominion Energy account number(s), and site-specific information as listed in the PIR template
- Brief summary of the anticipated project timeline
- Energy engineering analysis of the proposed project (and supporting documentation) adhering to industry standard practice, including but not limited to the following:
 - a. Program rebates are available on a first-come, first-served basis. Contact your Dominion Account Manager or the Program Administrator for information regarding program funding levels.
 - b. Summary of the estimated energy savings and eligible project costs;
 - c. Existing equipment specifications, baseline operational conditions and energy consumption data supported by spot or short-term measurements, trended data, or accepted engineering practices for each proposed measure;
 - d. A description of the calculations and methodologies used to support the baseline, proposed operation, natural gas savings, and eligible costs;
 - e. Supporting documentation for the estimated eligible measure costs;
 - f. Any additional information necessary for the review of the project such as calculation spreadsheets, simulation models, vendor quotes, and equipment specifications;
 - g. A commissioning plan for verifying the proposed measure operation and energy savings (See Section 1).

Following the submittal of a PIR and prior to project installation, the Program Administrator will conduct any site inspection activities necessary to confirm the baseline conditions and anticipated project scope. Once the initial application has been reviewed and approved, the Program Administrator will prepare and send an approval letter to the customer to notify them of their project review results and anticipated rebate amount. If the project does not meet the eligibility requirements, the PIR is not complete or of sufficient quality, the PIR will be rejected. The customer may address deficiencies in the PIR and resubmit for program consideration.

The customer is responsible for submitting the Pre-Installation Report and allowing time for the appropriate review prior to purchasing equipment. Projects that have been purchased or installed prior to Pre-Installation Approval may not be eligible for rebates under the ThermWise® Business Custom Rebates program.

4.2 Post-Installation Report (POR)

After receiving approval of the PIR from the Program Administrator and signing the Program Agreement, the customer may install the proposed measures. Upon completion of installation or construction activities for each approved project, customers should commence with the commissioning phase of the project. After commissioning is completed and any deficiencies addressed, the customer must submit a Post-Installation Report (POR) to the Program Administrator for final review and approval. A POR template is provided in Appendix B to assist the customer with compiling and submitting the necessary information. The customer must submit the following information to the Program Administrator as part of the POR:

- A summary of each installed measure, the commissioning performed, any deficiencies and how they were addressed, and a description of system operation noting pertinent operational set points
- Additional information necessary for the review of the project such as final calculation spreadsheets, simulation models, invoices, and equipment specifications
- The amount of natural gas reduction and supporting documentation to verify the calculation methodology and adequately characterize the operation of the system, and
- Eligible project costs and supporting documentation to verify costs

Once the POR has been reviewed and approved, the Program Administrator will prepare and send an approval letter to the Customer to notify them of their project review results and rebate amount. If the project does not meet the eligibility requirements, the POR is not complete or of sufficient quality, the POR will be rejected. The customer may address deficiencies in the POR and resubmit for program consideration.

4.3 Energy Engineering Analysis Requirements

Components of the PIR and the POR require either the Customer or a representative of the Customer to calculate natural gas consumption and estimate the savings associated with eligible measures. Such calculations are expected to conform to standard industry practices and techniques. The calculations must:

- Calculate savings explicitly, not by using “rule of thumb” estimates
- Account for variations in equipment and/or facility operating schedules and part load performance
- Estimate any interactive effects of any measure on other energy consuming systems, and
- Be well-documented and verifiable and all assumptions must be clearly stated, justifiable, and provide supporting documentation for values chosen

Applications submitted with inadequate or sub-standard engineering analysis will be rejected. The customer may address any deficiencies in the analysis and resubmit for program consideration.

4.4 Project Commissioning

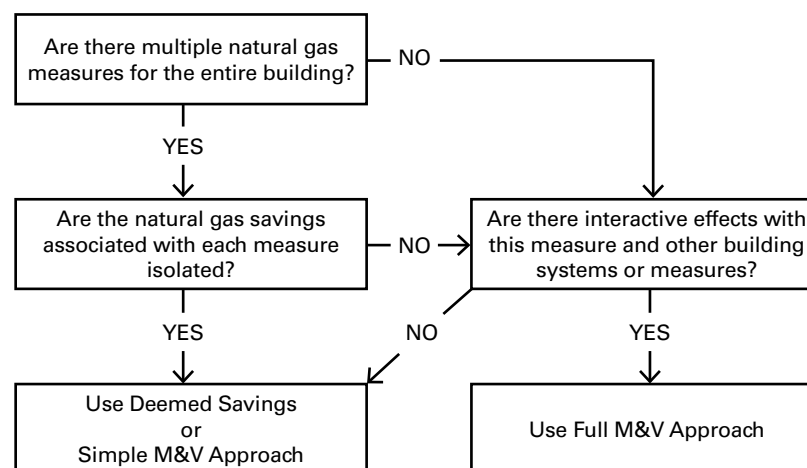
Commissioning includes verification of the estimated project savings and confirmation that the measures are operating as intended. Commissioning is required to receive a full rebate. This step insures that the predicted energy savings are being achieved and that the system's operation and performance has been optimized. Commissioning is the responsibility of the building owner and can be completed by internal staff or by contracting with the installing contractor or an engineering consultant.

Commissioning practices will vary depending on the individual characteristics of each project. In general, project-specific commissioning procedures may be classified according to three distinct approaches that represent increasing levels of detail and rigor. Figure 4 1 outlines the use of the following approaches.

- **Deemed savings:** Savings values are stipulated based on engineering calculations using typical equipment characteristics and operating schedules developed for particular applications, without on-site testing or metering.
- **Simple Monitoring & Verification (M&V):** Savings values are based on engineering calculations using typical equipment characteristics and operating schedules developed for particular applications, with some short-term testing or simple long-term metering to further refine calculations.
- **Full Monitoring & Verification (M&V):** Savings are estimated using a higher level of rigor than in the deemed savings or simple M&V approaches through the application of metering, billing analysis, or computer simulation.

A commissioning plan must be submitted for each project as part of the PIR. Commissioning procedures will vary depending on the measures installed and the project size and savings. Please contact the Program Administrator to determine the correct approach required in the commissioning plan for a particular project. If the customer and Program Administrator agree to pursue the "Full M&V" or "Simple M&V" options, the International Performance Measurement and Verification Protocol must be followed. Commissioning must be completed when the building is fully occupied and when the system's operation can be verified. Some measures may require operation during the cooling or heating seasons and the time required to complete commissioning activities can range from a few days to a few months.

Figure 4-1 - Measurement and Verification Method Selection



4.5 Deemed Savings

Deemed savings are stipulated based on standard energy engineering calculations using typical equipment characteristics and operating schedules for particular applications. No on-site testing or metering is performed. Common measures or simple equipment upgrades may be able to utilize a deemed savings approach.

4.6 Simple Monitoring & Verification (M&V)

The “Simple M&V” approach will rely heavily on manufacturer’s specifications, in conjunction with simple calculations, to determine equipment performance and estimate natural gas savings. The building may be small and contain only a few pieces of natural gas equipment, allowing the whole-building gas meter to be used to determine natural gas consumption. Spot measurements may be used to verify equipment operation and refine calculations, such as using a flue gas analyzer to determine combustion efficiency, measuring fluid supply/return temperatures with a handheld thermometer, or reading fluid flow rates from a building automation system (BAS).

4.7 Full Monitoring & Verification (M&V)

The “Full M&V” approach may involve more precise measurement of natural gas consumption at end-use equipment or the construction of a building energy model to determine the interactive effects of natural gas savings measures on other systems. Spot measurements will generally be insufficient for monitoring systems with complex or weather-dependent control sequences or variable loads. Complex systems with a variable load will need to be fully characterized over a period of time using portable data loggers or a BAS to precisely determine operating parameters and natural gas consumption.

5.1 Pre-Installation Report (PIR) – Boiler Controls ONLY

Program participants must submit a Pre-Installation Report (PIR) providing the required input data for the specific simplified analysis measure submittal to be considered for a rebate. A PIR template is provided in Appendix B to assist the customer with compiling and submitting the necessary information to qualify for a rebate.

To adequately assess projects for eligibility and program approval, the customer must submit the following information to the Program Administrator as part of the PIR:

- Customer Contact and Federal Tax Information (W-9)
- Project site address, Dominion Energy account number(s), and site-specific information as listed on the Application Cover Page
- Supporting documentation for the estimated eligible measure costs
- Any additional information necessary for the review of the project such as vendor quotes and equipment specifications
- Project details and system input requirements as requested on the Simplified Analysis Measures PIR application
- Signed Terms & Conditions

Following the submittal of a PIR and prior to project installation, the Program Administrator will conduct any site inspection activities necessary to confirm the baseline conditions and anticipated project scope. Once the initial application has been reviewed and approved, the Program Administrator will prepare and send an approval letter to the customer to notify them of their project review results and anticipated rebate amount. If the project does not meet the eligibility requirements, the PIR is not complete or of sufficient quality, the PIR will be rejected. The customer may address deficiencies in the PIR and resubmit for program consideration.

The customer is responsible for submitting the PIR and allowing adequate time for the Program Administrator's review prior to purchasing equipment. Equipment that has been purchased or installed prior to approval of the PIR will not be eligible for rebates under the ThermWise Business Custom Rebates Program.

The customer acknowledges that a submission of an application does not guarantee participation in the Program, and issuance of a rebate shall be at the sole discretion of Dominion Energy. Dominion Energy is under no obligation to approve any measure or offer a rebate if the customer fails to comply with the requirements set forth in the Terms & Conditions or the Program Manual.

5.2 Post-Installation Report (POR)

After receiving approval of the PIR from the Program Administrator, the customer may install the proposed measures.

After completion of installation or construction activities for each approved project, the customer must submit a Post-Installation Report (POR) to the Program Administrator for final review and approval. A POR template is provided in Appendix B to assist the customer with compiling and submitting the necessary information. The customer must submit the following information to the Program Administrator as part of the POR:

- Eligible project costs and supporting documentation to verify costs;
- Additional information necessary for the review of the project such as invoices and equipment specifications;
- Project details and system input requirements as requested on the Simplified Analysis Measures Streamlined POR application for the following measures:
 - a. Boiler Controls
 - b. Boiler O2 Trim
 - c. Boiler Linkageless Controls
 - d. Combination Boiler Oxygen Controls
 - e. Steam Traps
 - f. RCx “Find & Fix”
 - g. Combined Heat & Power
 - h. High Performance Building Envelope

Once the POR has been reviewed and approved, the Program Administrator will prepare and send an approval letter to the Customer to notify them of their project review results and rebate amount. If the project does not meet the eligibility requirements, the POR is not complete or of sufficient quality, the POR will be rejected. The customer may address deficiencies in the POR and resubmit for program consideration.

5.3 Energy Engineering Analysis Requirements

Energy Engineering Analyses are not required for Simplified-Analysis Measure projects.

5.4 Project Commissioning

Commissioning is not required for Simplified-Analysis Measure projects.

Figure 6-1 Thermwise Business Programs Overview

	ThermWise Business Rebates	ThermWise Business Custom Rebates
Customer Eligibility	Equipment must be installed in a separately-metered facility on a Commercial GS rate schedule in Dominion Energy' Utah service territory	Eligible measures must be installed in a separately-metered commercial facility on a Commercial GS rate schedule in Dominion Energy' Utah service territory
Program Eligibility	New construction and retrofit projects are eligible	New construction and retrofit projects are eligible
Program Technical Assistance	Customer chooses participating vendor	Customer is required to complete energy engineering and commissioning; Program Administrator will verify results
Program Financial Offer	Energy-efficiency measure-based rebates (\$ per unit, \$ per kBtu/hr input) paid upon installation and operation of equipment	The lesser of (a) \$1.00/therm saved in the first year or, (b) 50% of the eligible project cost (with the exception of RCx "Find & Fix"). Rebate is paid upon verification of installation and completion of commissioning
Measure Requirements	See www.ThermWise.com for energy-efficiency measure requirements	Any cost-effective measure that saves natural gas for a minimum of 7 years; Not available for measures contained in ThermWise Business Rebates Program
When to Apply	Complete program application after energy-efficiency measure installation	Complete Pre-Installation Report before purchasing any equipment and complete Post-Installation Report after installation and commissioning
Key Features	Simple post-purchase application for common measures	Rebates available to buy down capital costs for custom-engineered projects. Simplified Analysis approach allows applicants pursuing specific measures to forego energy engineering and commissioning.

THERMWISE BUSINESS CUSTOM REBATES**What is the rebate amount and how is it paid?**

Rebates offered through the ThermWise Business Custom Rebates Program for qualifying, commissioned projects and completed pursuant to the terms of the Program Agreement shall be the lesser of:

- \$1.00 per therm saved during the first year, as approved by the Program Administrator, or
- 50% of the eligible project cost as determined by the Program Administrator (with the exception of RCx "Find & Fix").

Rebates will be paid in the form of a check within 45 days of approval of the completed project by the Program Administrator.

Can measures that qualify for post-purchase rebates from the Business Rebate Program be submitted through the Business Custom Program?

Only measures that are not included in the Business Rebate Program are eligible for rebates through the Custom Program. Any qualifying measures identified in the PIR that are eligible for the Business Rebates Program will be removed from the Custom Program and processed according to the Business Rebates Program guidelines.

What measures are eligible for the Simplified Analysis Measures?

A defined list of measures will be eligible for rebates utilizing a Simplified Analysis Approach.

These measures include:

- Boiler Controls
- Boiler O2 Trim
- Boiler Linkageless Controls
- Combination Boiler Oxygen Controls
- Steam Traps
- RCx "Find & Fix"
- Combined Heat & Power
- High Performance Building Envelope

Customers must contact the Program Administrator to determine if a measure qualifies for the Simplified Analysis approach.

CUSTOMER ELIGIBILITY**What customers are eligible to receive a ThermWise Business Custom rebate?**

Business customers on a Utah service territory General Service (GS) Rate Schedule are eligible to receive a ThermWise Business Custom rebate.

Are customers in the Wyoming territory of Dominion Energy eligible?

No. Customers must be served by Dominion Energy within its Utah or Idaho service territory as determined by the facility address on the Customer's Dominion Energy bill. See Appendix D for a map of the Dominion Energy Utah Service Territory.

Are customers with multiple meters on different rate schedules at a single facility address eligible?

For customers with multiple meters on different rate schedules, eligibility must be determined on a measure-specific basis. Measures are eligible only if directly supplied with natural gas from a meter on a Commercial GS rate schedule. Please contact the Program Administrator or your Dominion Energy Account Representative to confirm whether measures will qualify for the Program.

PROCESS DETAILS**What is an appropriate baseline for energy consumption?**

The appropriate baseline is project-dependent and may be based upon existing system operation, energy code requirements, or industry standard practice. See Section 2.5 of the Program Manual for guidelines for determining the baseline for a particular project.

What project expenses are eligible?

See Section 2.4 of the Program Manual for a description of eligible project expenses. Costs must be fully documented and submitted to the Program Administrator to be eligible.

Is it required to hire an energy engineer to perform the engineering calculations and draft the Pre-Installation and Post-Installation Reports?

Hiring an energy engineer is not a requirement to participate in the Program. The scope of analysis required, and the capability of the Customer to complete the analysis, will depend on the proposed energy efficiency measures and the scale of the project. Where in-house customer engineering expertise is not available or adequate for the project, it is recommended that the Customer contract with an energy engineer familiar with the proposed measures and the program. Please contact the Program Administrator to determine whether hiring an energy engineer may be beneficial to your project.

Can an energy study performed as part of a Rocky Mountain Power energy efficiency project be used for the PIR and POR required by the ThermWise Business Custom Rebates program?

Rocky Mountain Power energy studies focus only on electric energy efficiency measures. A Customer may contract separately with the Rocky Mountain Power energy consultant to examine natural gas savings opportunities as part of the energy analysis performed for Rocky Mountain Power. In such a case, the Rocky Mountain Power Energy Analysis Report (EAR) may be submitted for the PIR and the Final Inspection Report (FIR) may be submitted for the POR, assuming all of the requirements listed in this Program Manual are satisfied.

How does a customer apply for a Simplified Analysis Measure project?

Program participants must submit a Pre-Installation Report (PIR) for boiler controls providing the required input data for the specific simplified analysis measure submittal to be considered for a rebate. A PIR template is provided in Appendix B of the Program Manual to assist the customer with compiling and submitting the necessary information to qualify for a rebate. A PIR is not required for simplified air-to-air heat exchangers and pipe insulation measures.

DOMINION ENERGY'S OTHER ENERGY EFFICIENCY PROGRAMS**Are customers eligible to participate in Dominion Energy's other energy efficiency programs and the ThermWise Business Custom Rebates program at the same time?**

Yes, but not on the same project.

What if I choose to participate in the ThermWise Business Custom Rebates program and later decide I want to switch to the ThermWise Business Rebate or Multifamily Rebate Programs?

Measures submitted to the Business Custom Rebate Program that are identified as eligible for the Business Rebate or Multifamily Rebate programs will be transferred to the appropriate program and processed according to the respective program guidelines. Only measures with verifiable natural gas savings that do not qualify for either the Business Rebate Program or Multifamily Rebate Programs will be processed through the Business Custom Rebate Program.

Appendix B. THERMWISE BUSINESS CUSTOM REBATES - AVAILABILITY

The following map shows the areas served by Dominion Energy where ThermWise Business Custom Rebates are available.

